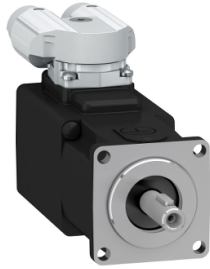


# Product data sheet

Specifications



## AC servo motor BSH, Lexium 32, 0.21N.m, 9000rpm, keyed shaft, with brake, IP65

BSH0401P36F2A

Product availability: Non-Stock - Not normally stocked in distribution facility

Price\*: 1,615.50 USD

### Main

Device short name	BSH
Product or Component Type	Servo motor
Maximum mechanical speed	10000 rpm
Continuous stall torque	1.86 lbf.in (0.21 N.m) LXM32.U60N4 1.5 A, 480 V, three phase 1.86 lbf.in (0.21 N.m) LXM32.U60N4 1.5 A, 400 V, three phase 1.86 lbf.in (0.21 N.m) LXM32.U45M2 1.5 A, 230 V, single phase
Peak stall torque	7.08 lbf.in (0.8 N.m) LXM32.U60N4 1.5 A, 480 V, three phase 7.08 lbf.in (0.8 N.m) LXM32.U60N4 1.5 A, 400 V, three phase 7.08 lbf.in (0.8 N.m) LXM32.U45M2 1.5 A, 230 V, single phase
Nominal output power	166 W LXM32.U60N4 1.5 A, 480 V, three phase 166 W LXM32.U60N4 1.5 A, 400 V, three phase 77 W LXM32.U45M2 1.5 A, 230 V, single phase
Nominal torque	1.558 lbf.in (0.176 N.m) LXM32.U60N4 1.5 A, 480 V, three phase 1.558 lbf.in (0.176 N.m) LXM32.U60N4 1.5 A, 400 V, three phase 1.629 lbf.in (0.184 N.m) LXM32.U45M2 1.5 A, 230 V, single phase
Nominal speed	9000 rpm LXM32.U60N4 1.5 A, 480 V, three phase 9000 rpm LXM32.U60N4 1.5 A, 400 V, three phase 4000 rpm LXM32.U45M2 1.5 A, 230 V, single phase
Shaft end	Keyed
IP Degree of Protection	IP65 standard
Speed feedback resolution	32768 points/turn
Holding brake	With
Mounting Support	International standard flange
Electrical Connection	Rotatable right-angled connectors

### Complementary

Range Compatibility	Lexium 32
supply voltage max	400 V
Phase	Three phase
Continuous stall current	1.12 A
maximum continuous power	220 W
Maximum current Irms	4.7 A LXM32.U60N4 480 V 4.7 A LXM32.U60N4 400 V 4.7 A LXM32.U45M2 230 V
Maximum permanent current	1.12 A
Switching frequency	8 kHz

Price is "List Price" and may be subject to a trade discount – check with your local distributor or retailer for actual price.

<b>Second shaft</b>	Without second shaft end
<b>Shaft diameter</b>	0.3 in (8 mm)
<b>Shaft length</b>	1.0 in (25 mm)
<b>Key width</b>	0.5 in (12 mm)
<b>Feedback type</b>	Single turn SinCos Hiperface
<b>Holding torque</b>	3.5 lbf.in (0.4 N.m) holding brake
<b>Motor flange size</b>	1.6 in (40 mm)
<b>Number of motor stacks</b>	1
<b>Torque constant</b>	0.19 N.m/A 248.0000000000 °F (120 °C)
<b>Back emf constant</b>	13.6 V/krpm 68.0000000000 °F (20 °C)
<b>Number of motor poles</b>	10
<b>Rotor inertia</b>	0.04 kg.cm <sup>2</sup>
<b>Stator resistance</b>	17.2 Ohm 68.0000000000 °F (20 °C)
<b>Stator inductance</b>	14.6 mH 68.0000000000 °F (20 °C)
<b>Stator electrical time constant</b>	0.85 ms 68.0000000000 °F (20 °C)
<b>Maximum axial force Fa</b>	0.2 x Fr
<b>Brake pull-in power</b>	5.8 W
<b>Type of cooling</b>	Natural convection
<b>Length</b>	3.9 in (99.4 mm)
<b>Centring collar diameter</b>	1.2 in (30 mm)
<b>Centring collar depth</b>	0.10 in (2.5 mm)
<b>Number of mounting holes</b>	4
<b>Mounting holes diameter</b>	0.2 in (4.5 mm)
<b>Circle diameter of the mounting holes</b>	1.8 in (46 mm)
<b>Net Weight</b>	1.3 lb(US) (0.6 kg)

## Ordering and shipping details

<b>Category</b>	US1PC5318282
<b>Discount Schedule</b>	PC53
<b>GTIN</b>	3606485467191
<b>Returnability</b>	No
<b>Country of origin</b>	DE

## Packing Units

<b>Unit Type of Package 1</b>	PCE
<b>Number of Units in Package 1</b>	1
<b>Package 1 Height</b>	4.3 in (11.0 cm)
<b>Package 1 Width</b>	6.7 in (17.0 cm)
<b>Package 1 Length</b>	9.4 in (24.0 cm)
<b>Package 1 Weight</b>	22.1 oz (627.0 g)

## Sustainability

**Green Premium™ label** is Schneider Electric's commitment to delivering products with best-in-class environmental performance. Green Premium promises compliance with the latest regulations, transparency on environmental impacts, as well as circular and low-CO<sub>2</sub> products.

**Guide to assessing product sustainability** is a white paper that clarifies global eco-label standards and how to interpret environmental declarations.

[Learn more about Green Premium >](#)

[Guide to assess a product's sustainability >](#)



Transparency RoHS/REACH

## Well-being performance

Mercury Free

Rohs Exemption Information Yes

Pvc Free

## Certifications & Standards

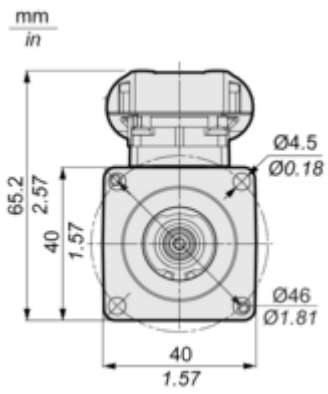
Reach Regulation	<a href="#">REACH Declaration</a>
Eu Rohs Directive	Pro-active compliance (Product out of EU RoHS legal scope)
China Rohs Regulation	<a href="#">China RoHS declaration</a>
Environmental Disclosure	<a href="#">Product Environmental Profile</a>
Weee	The product must be disposed on European Union markets following specific waste collection and never end up in rubbish bins.
Circularity Profile	No need of specific recycling operations
California Proposition 65	"WARNING: This product can expose you to chemicals including: Lead and lead compounds, which is known to the State of California to cause cancer and birth defects or other reproductive harm. For more information go to <a href="http://www.P65Warnings.ca.gov">www.P65Warnings.ca.gov</a> "

Dimensions Drawings

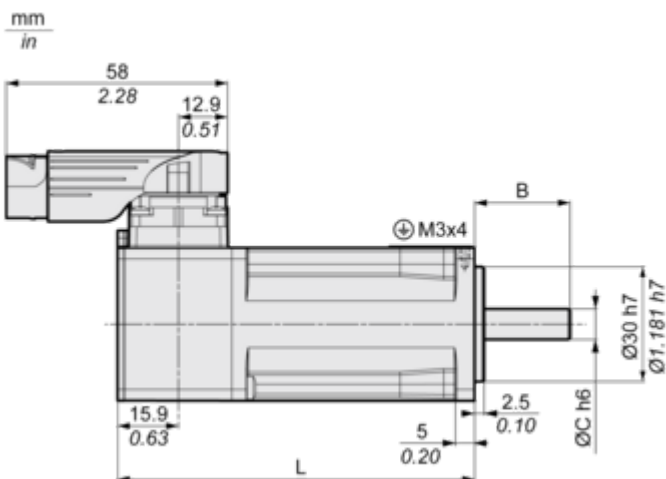
Servo Motors Dimensions

For Servo Motor with Brake

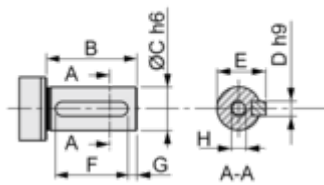
Front view



Left view



DIN 6885 A



	Dimensions in mm	Dimensions in in.
L	99.4	3.91
B	25	0.98
C	8	0.31
D	3	0.12

	Dimensions in mm	Dimensions in in.
<b>E</b>	9.2	0.36
<b>F</b>	12	0.47
<b>G</b>	4	0.16
<b>H</b>	DIN 332 DS M3 x 9	
<b>A</b>	DIN 6885-A3x3x12	